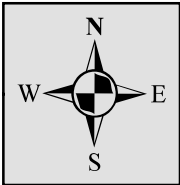
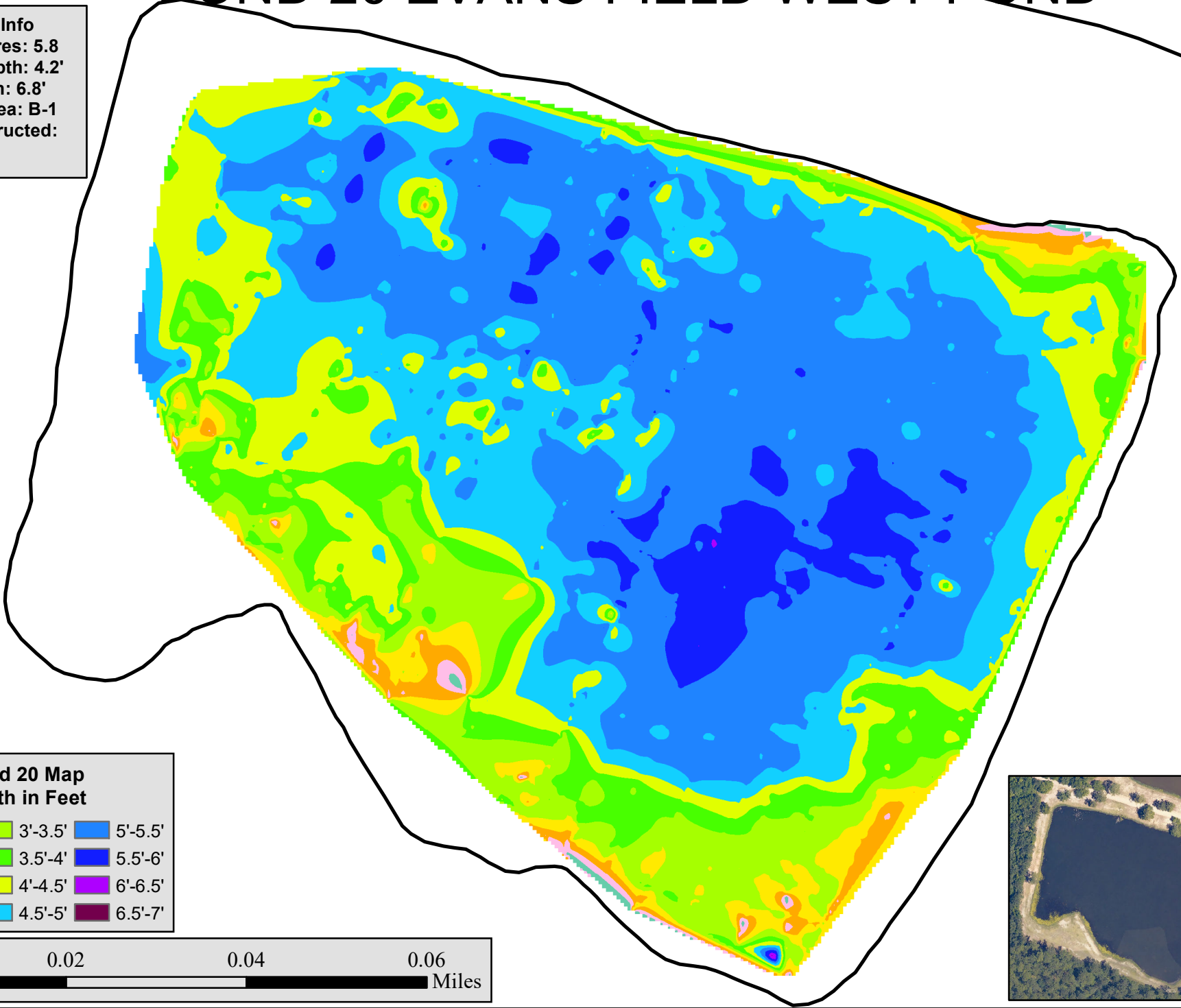


POND 20 EVANS FIELD WEST POND

Pond 20 Info
Surface Acres: 5.8
Average Depth: 4.2'
Max Depth: 6.8'
Training Area: B-1
Year Constructed:
1967



**Pond 20 Map
Depth in Feet**

1'-1.5'	3'-3.5'	5'-5.5'
1.5'-2'	3.5'-4'	5.5'-6'
2'-2.5'	4'-4.5'	6'-6.5'
2.5'-3'	4.5'-5'	6.5'-7'

