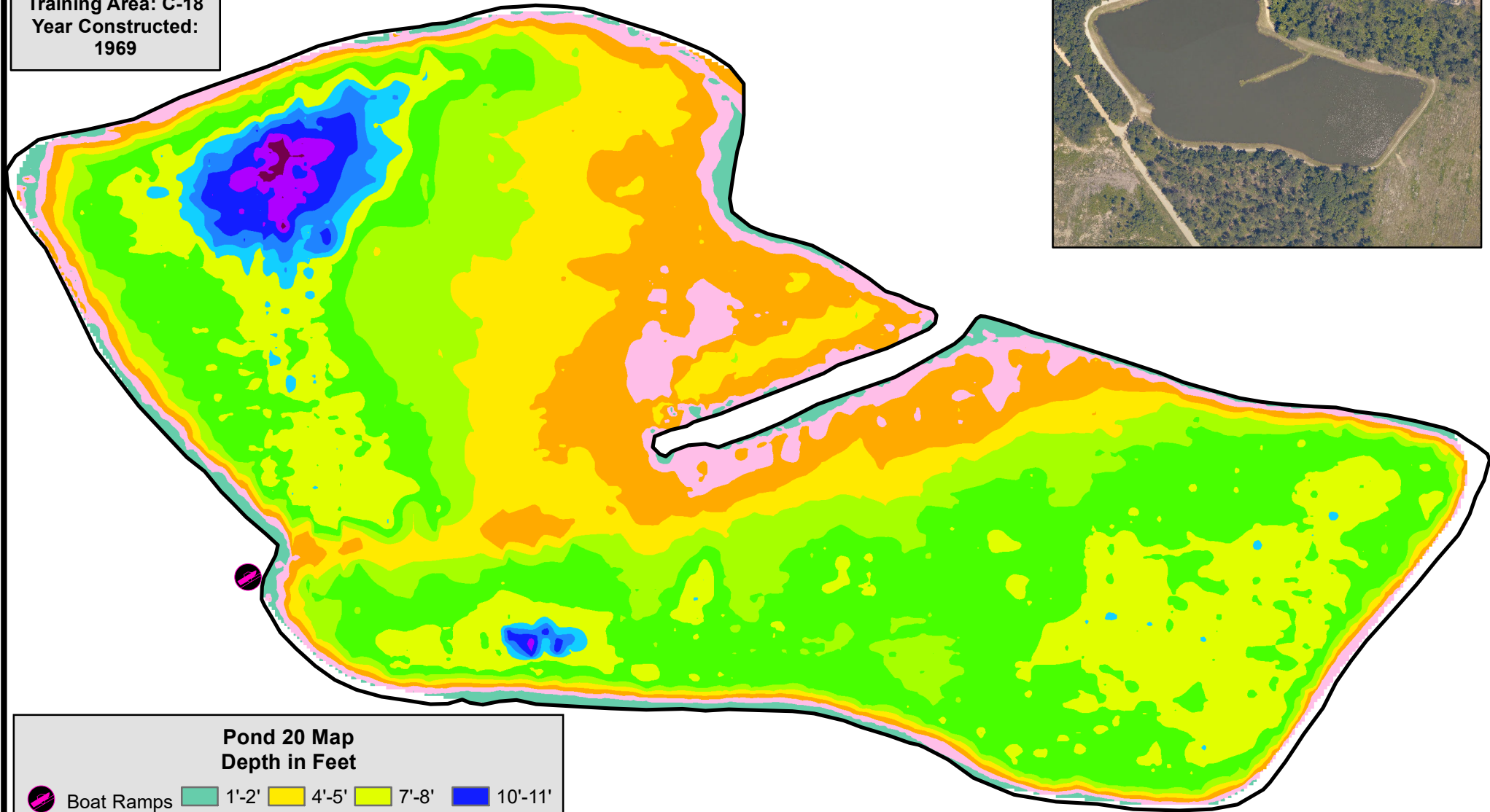


POND 21 RICHMOND HILL WEST POND

Pond 21 Info
Surface Acres: 15
Average Depth: 5.0'
Max Depth: 12.8'
Training Area: C-18
Year Constructed:
1969



Pond 20 Map
Depth in Feet

Boat Ramps	1'-2'	4'-5'	7'-8'	10'-11'
	2'-3'	5'-6'	8'-9'	11'-12'
	3'-4'	6'-7'	9'-10'	12'-13'

